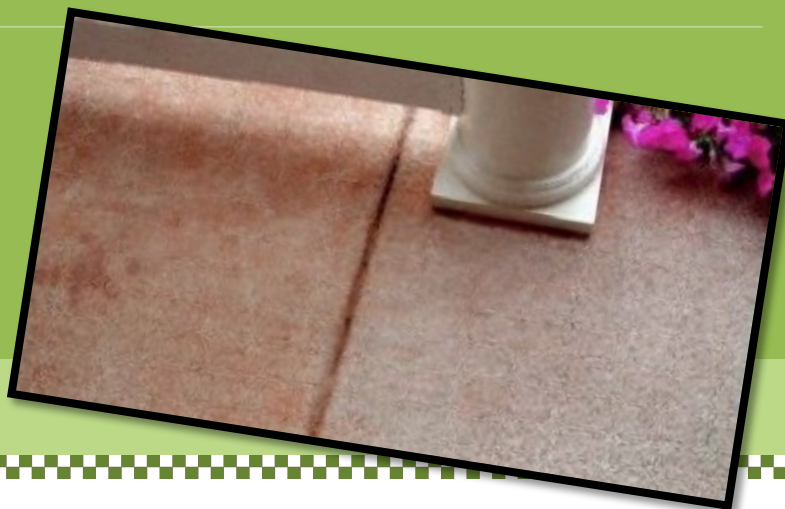


# Red Clay Stain Remover

A unique formulation that removes red clay stains from concrete, masonry, brick, stucco and block surfaces.



January 2015

## Physical Constants

**Specific Gravity:** (H<sub>2</sub>O=1) 1.2 @ 24° C.

**Solubility in Water:** Soluble

**Evaporation Rate:** Same as water

**pH:** 1.0 (Corrosive)

**Viscosity:** More than water

**Method of Application:** Sprayer & pressure washer

### COVERAGE RATE:

250-300 sq. ft. / gallon

### CONTAINER SIZES:

1-Gallon Bottles

5-Gallon Pails

55-Gallon Drums

## PRODUCT ADVANTAGES

**Red Clay Stain Remover is: Economical \* Fast \* Non-Flammable \* Non-Toxic \* Easy Clean-up \* Biodegradable \* Water Soluble Considered a 'GreenProduct'**

## TYPICAL USES

For industrial, commercial and residential use on sidewalks, driveways, parking decks, floors, ramps, brick, pavers, stucco, and cinder block or any masonry surface that has stains, particularly rust stains.

*For exterior use only.*

Envirosafe Manufacturing / Eco-Wares, Inc.

7634-B Progress Cir.

Melbourne, Florida 32904

Toll Free (866) 874-8070

# Red Clay Stain Remover

## Application Instructions

### ALWAYS TEST ON SURFACES PRIOR TO APPLICATION!

**Limitations:** Apply in good weather when air and surface temperature are above 45°F. and surface temperature is at least 5°F. above the Dew Point. For optimum application properties, materials should be between 70-90°F. prior to application. Maintain unused material in closed containers in protected storage at 40-90°F **out of direct sunlight**. *This product is considered Corrosive*

### SURFACE PREPARATION: Always test before application

1. Water all surrounding grass and shrubs well before starting application of **Red Clay Stain Remover**. Clean all oil and grease off surface using **EnviroClean Degreaser**. Rinse well. While still damp, apply **Red Clay Stain Remover** with a plastic garden pump sprayer. (Radiator and Battery Acid stains are extremely difficult to remove. These stains will

require several cleanings. Test for concrete durability.)

2. **Allow 3-5 minutes** for **Red Clay Stain Remover** to deep clean the pores of the concrete depending on the extent of the soiling and the durability of the surface (This is why Testing is important)
3. Agitate concrete surface using a stiff nylon brush, broom or rotating concrete scrubber and a 3000 psi pressure washer.
4. Power wash away all dirt and remaining **Red Clay Stain Remover** and rinse well.
5. Repeat on any stubborn stains scrubbing with a stiff nylon bristle brush. Pressure wash with minimum 3000 psi. Manufacturer recommends OSHA Compliance chemical gloves, eye protection and rubber boots.  
Rinse everything with plenty of water. Rinse equipment immediately after use.
6. Apply **Trojan Masonry Sealer** to seal surface and to keep future stains from penetrating.

7. Clean-up: Clean all equipment with **EnviroClean Degreaser** and water to neutralize

**Safety:** Safe storage, handling and use dictate that adequate health and safety precautions be observed with this product. User is specifically directed to consult the current Material safety Data Sheet for this product as well as precautions contained on product labeling. **This product is considered Corrosive.**

**Notice:** The technical data contained herein is true and accurate to the best of our knowledge. All products are offered and sold subject to EnviroSafe Manufacturing Corps. Standard Conditions of Sale. Published technical data and instructions are subject to change without prior notice