

# Erase Cleaner

A fluid applied cleaner that softens and safely removes wax, grease, oil, ink and some adhesives.



January 2011

## Physical Constants

**Specific Gravity:** (H<sub>2</sub>O=1) 1.83 @ 24° C.

**Solubility in Water:** Excellent

**Evaporation Rate:** Same as water

**pH:** 1% solution 10.2

**Shelf Life:** 1 Year

**Method of Application:** Sprayer or mop

### COVERAGE RATE:

Coverage will vary depending on dilution rate and use

### CONTAINER SIZES:

1-Gallon Bottles

5-Gallon Pails

55-Gallon Drums



## PRODUCT ADVANTAGES

**Erase Cleaner is: Economical \* Effective**

**\* Fast \* Concentrate – Dilute to match the job  
1:10 (Water) for Light Cleaning, 1:5 Normal  
Cleaning, 1:1 for Heavy Cleaning or Straight  
for Adhesive Removal or encrusted oil and  
grease**

## TYPICAL USES

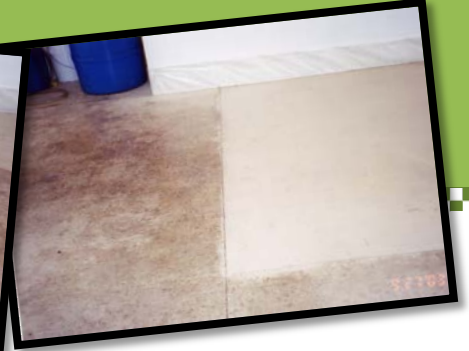
For industrial, commercial and residential use on sidewalks, driveways, parking decks, floors, ramps, brick, pavers, stucco, and cinder block or any surface needing to be cleaned. ALWAYS TEST BEFORE USE.

Envirosafe Manufacturing / Eco-Wares, Inc.

7634-B Progress Circle

Melbourne, Florida 32904

Toll Free (866) 874-8070



# Erase Cleaner

## Application Instructions

### ALWAYS TEST ON SURFACES PRIOR TO APPLICATION!

**Limitations:** Apply in good weather when air and surface temperature are above 45°F. and surface temperature is at least 5°F. above the Dew Point. For optimum application properties, materials should be between 70-90°F. prior to application. Maintain unused material in closed containers in protected storage at 40-90°F out of direct sunlight.

**SURFACE PREPARATION:** Always test before application

#### 1. To Remove Carpet Adhesive:

First remove carpet or Linoleum and scrape off as much residue as possible with a razor floor scraper. Next, spray or mop on a copious amount of **Erase Cleaner** as it comes from the container. (Do NOT dilute **Erase** for this application). Immediately cover the area treated with a sheet of polyethylene plastic being sure to smooth out all air bubbles. Keep covered for 12-24 Hrs. With a razor floor scraper, scrape up as much adhesive as possible. (Dispose of adhesive in accordance with local laws.) If needed, re-apply **Erase Cleaner** with either mop or sprayer and

cover for 4-6 hrs. or until the last of the residue is soft. Remove plastic cover and pressure wash at 3,000 psi to thoroughly clean and remove all **Erase Cleaner** before attempting to apply any other coating.

2. **To Remove Wax:** Dilute **Erase Cleaner** with water at a 2:1 water to **Erase Cleaner** ratio and wash floor. Remove the rinse water with a 'wet vac' or other means of removal. Thoroughly rinse.

3. **To Remove Ink:** Wear rubber or nitrile gloves. Pour a small amount of **Erase** on a rag and clean area of Ink. If on fabric, TEST on a concealed area first to see if it adversely affects the color in the fabric.

4. **To Clean Paint off Concrete:** Pour small amount of **Erase Cleaner** straight from container onto painted area. Cover with a piece of polyethylene plastic and leave for several hours. If on a vertical surface, press the plastic onto the **Erase** to get it to stick. Leave for several hours and check often to see if paint has softened. Using a wire brush, rub the areas until majority of paint is lifted. Repeat until all paint is softened and pressure wash with 3,000 psi to completely remove from surface.

5. **To Clean Vinyl Furniture or Vinyl Siding:** Dilute **Erase Cleaner** 4:1 (4 water to 1 **Erase Cleaner**) Wear Rubber gloves so skin does not get dried out. Use a soft clean rag. Dip into solution and wipe surface, using another clean rag to dry area.

**Safety:** Safe storage, handling and use dictate that adequate health and safety precautions be observed with this product. User is specifically directed to consult the current Material safety Data Sheet for this product as well as precautions contained on product labeling.

**Notice:** The technical data contained herein is true and accurate to the best of our knowledge. All products are offered and sold subject to Envirosafe Manufacturing Corps. Standard Conditions of Sale. Published technical data and instructions are subject to change without prior notice